

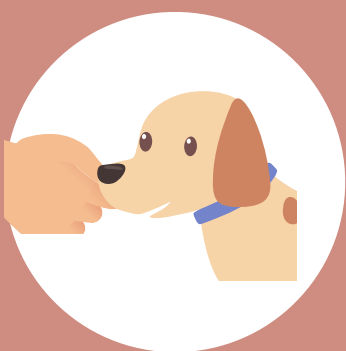


# Magnet Hand



## Set Up

Load your hand with a generous quantity of irresistible treats and make a fist around them.



## Teaching the Behavior

While standing in front of your dog at home, present your closed fist with treats inside to them, allowing him/her to get a sniff of the tasty treat you have. As your dog starts to smell your hand, move one finger so that your dog can begin to eat the treats. As your dog eats, slowly curl the rest of your fingers, ensuring that your dog is continuously eating, trying to get the food out of your fist. Move to the next step when you are able to keep your dog at the entire time your hand is curling as if s/he were magnetized to you. The mechanics of this can be tricky at first for both of you! Give yourself grace and ensure that you've got it down in a stationary position before you add movement.



## Adding Movement

At home, start backing away from your dog while the treat from your "magnet hand". Start slowly, one step at a time, ensuring that your dog can continuously sniff from your hand before adding more steps. Once your dog can successfully eat from your "magnet hand" while you move backward, try walking while walking beside you.



## Add Distractions & Triggers

- Once your dog can eat from your "magnet hand" for a number of steps while walking beside you at home, you can try this in a new outdoor environment - but do not add in triggers yet!
- The first time you try the behavior outside, you may need to go back to standing still or walking backwards so that you can work up to beside walking in the new environment.
- Once your dog can reliably eat from your magnet hand with no distractions or triggers present, you can begin to use this in the problem context.
- Always remember to add distance wherever possible to ensure that your dog can be successful.

Once strong, this behaviour will attach your dog to your hand as if they were magnetized to you. A strong "magnet hand" behaviour will allow you to pass triggers and distractions around which your dog is not able to remain under threshold, to prevent a reaction.

